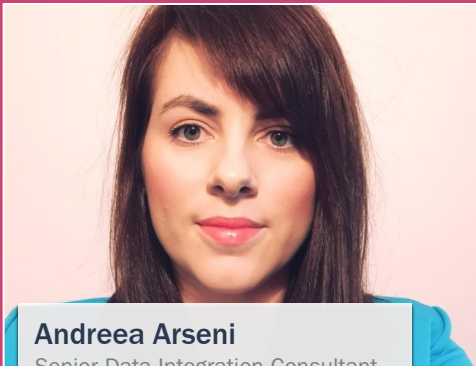


RAPIDI

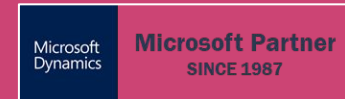
Welcome to Open Office Hours

Session 10: Scheduling

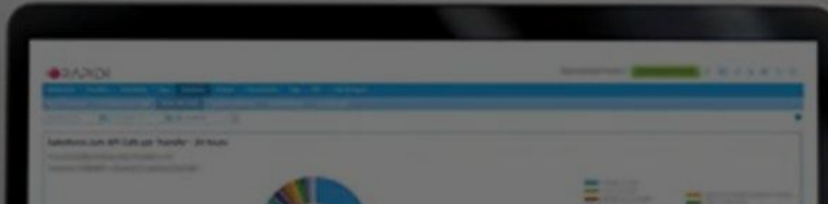


Andreea Arseni

Senior Data Integration Consultant
& Customer Success

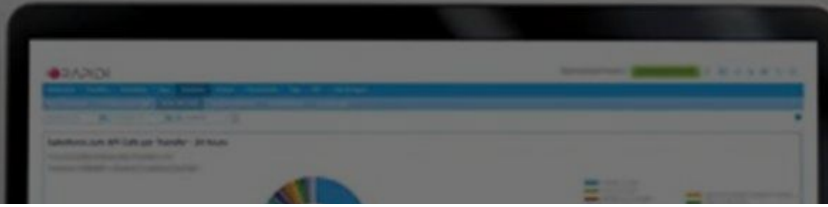


Agenda



- Scheduling
- MyRapidi: Scheduling
- Questions
- Upcoming Sessions
- Resources

Scheduling



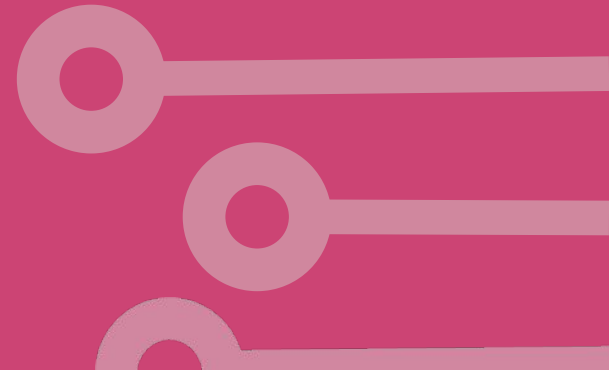
The Rapidi Scheduler lets you configure Transfers or Groups of Transfers to run automatically at defined intervals. Once set up, schedules run unattended. If something goes wrong or a run is missed, the system can notify your team automatically.

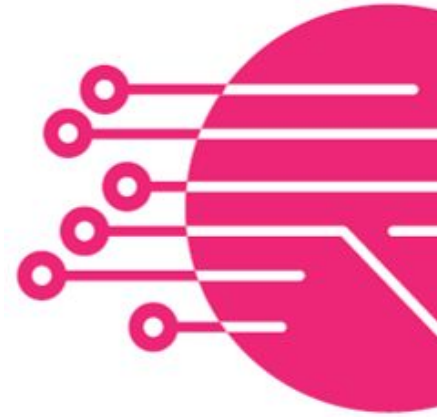
Schedule Overview:

- **Next Date/Time** - Define when the schedule should begin running for the first time.
- **Interval** - How often the schedule repeats (e.g., every 15 minutes, hourly, daily).
- **Run on these days** - Select which days of the week the schedule is allowed to run.
- **Time period (Start Time, End Time)** - Optionally restrict execution to a specific time window within the day.
- **Error handling** - Define what Rapidi should do if errors are encountered during a run.
- **Priority** - Set the relative priority so Rapidi executes high-priority schedules first when multiple are due.
- **Status** - Active schedules run normally; Stopped schedules are paused until manually restarted.
- **Tags** - If your Transfers use Tags, assign the Tag values that each schedule should use at runtime.



MyRapidi: Scheduling





Questions?



info@rapidionline.com
www.rapidionline.com
MyRapidi.com/wiki

Register for the upcoming sessions...

Open Office Hours — Quick Links

- Main page (what it is + upcoming sessions): Open Office Hours
<https://www.rapidionline.com/resources/open-office-hours>
- Complete Season 1 schedule (all 12 sessions + phases): Season 1 schedule
<https://www.rapidionline.com/product-updates/open-office-hours-season-1>
- Session 11 page (full details + registration): Triggers & near-real-time patterns
<https://www.rapidionline.com/open-office-hours-triggers-realtime>

Complete Schedule for OOH Season 1

PHASE 1: FOUNDATION (JANUARY)

Learn to navigate MyRapidi, structure transfers, and connect your systems.

Date	Session Title	Key Topics
Jan 15	MyRapidi Interface Walkthrough	Navigation, Transfers, Schedules, Groups, LinkStorages
Jan 22	Transfer Design 101	Actions, patterns, avoiding duplicates, design vs runtime
Jan 29	Connections: D365 OData Cloud	Azure App Registration, OAuth2, permissions, testing

PHASE 2: CONFIGURATION (FEBRUARY)

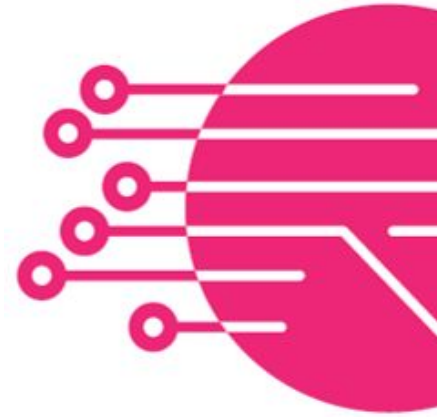
Master field mappings, timestamps, error handling, and CRM connections.

Date	Session Title	Key Topics
Feb 5	Connections: Salesforce & HubSpot	OAuth flows, user permissions, re-authorization
Feb 12	Field Mappings	Type conversions, conditional defaults, lookups, nulls
Feb 19	Timestamps & RTI	Change detection, Runtime Information Register, patterns
Feb 26	Continue on Error & Data Errors	Error handling, interpreting errors, and reprocessing safely

PHASE 3: ADVANCED (MARCH-APRIL)

Advanced troubleshooting, optimization, and multi-company patterns.

Date	Session Title	Key Topics
Mar 5	Logs & Runs	Troubleshooting flow, reading logs, isolating issues
Mar 12	Link Storage Deep Dive	Cross-referencing IDs, naming, import/export, and safety
Mar 19	Scheduling	Run windows, overlaps, dependencies, and time zones
Mar 26	Triggers & Near-Real-Time Patterns	When to trigger, rate limiting, polling vs triggers
Apr 9	Tags & Reusability	Parameterization, multi-company, variable substitution
Apr 30	AI In MyRapidi - An Overview	Introduction to AI in MyRapidi
May 7	AI Albert Agent	AI Assistant Albert with examples
May 14	MCP Server	MCP server setup for Rapidi



Give us Feedback

https://www.getfeedback.com/r/GLRQ1hn_W



info@rapidionline.com
www.rapidionline.com
MyRapidi.com/wiki

RESOURCES (1)

Documentation: [MyRapidi.com/wiki](https://myrapidi.com/wiki)

Support: <https://www.rapidionline.com/support>

Submit a case via MyRapidi: <https://myrapidi.com>

Subscribe to Product Updates: <https://www.rapidionline.com/product-updates>

Product Releases Notes: https://myrapidi.com/wiki/product_release_notes



SIMPLE

With a standard subscription
you can create new integrations yourself



FAST

Rapidi can be
implemented as standard in just a few days



ROBUST

No programming and
proven best practice configurations



FLEXIBLE

Any transfer can be in
any direction or bi-directional

RESOURCES (2)

[Schedules](#)

[Failing Schedules](#)

[Setup Schedules](#)

[Schedule Tags](#)



SIMPLE

With a standard subscription
you can create new integrations yourself



FAST

Rapidi can be
implemented as standard in just a few days



ROBUST

No programming and
proven best practice configurations



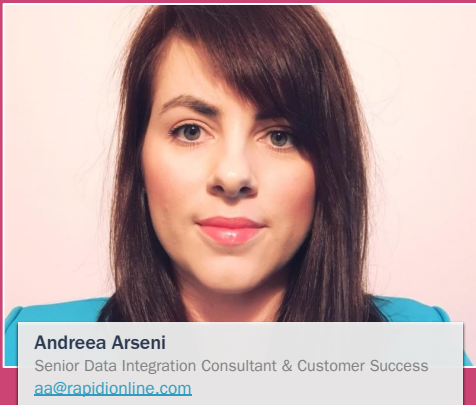
FLEXIBLE

Any transfer can be in
any direction or bi-directional



THANK YOU!

www.rapidionline.com



Andrea Arseni

Senior Data Integration Consultant & Customer Success
aa@rapidionline.com

