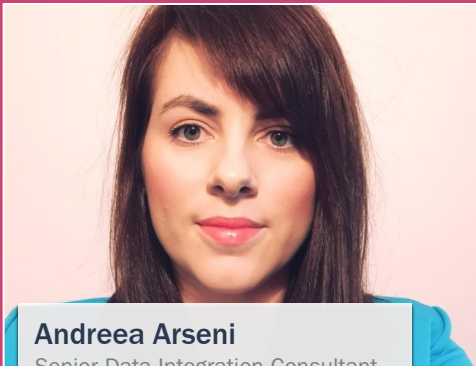


RAPIDI

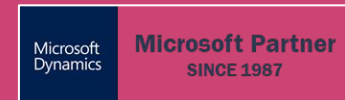
Welcome to Open Office Hours

Session 12: Tags & Reusability

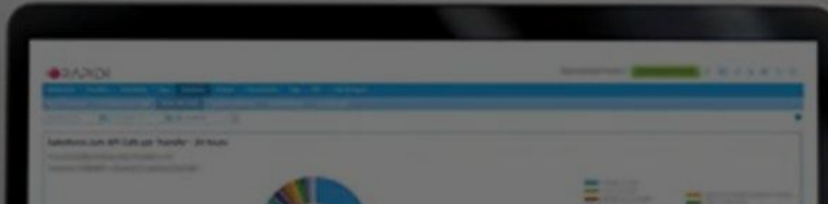


Andreea Arseni

Senior Data Integration Consultant
& Customer Success

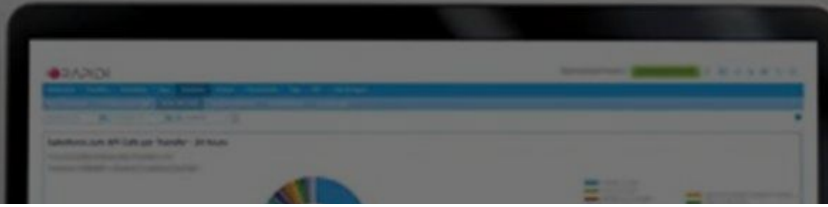


Agenda



- What are Tags?
- Where Tags are Used
- Demo: Tags in Myrapidi
- Questions
- Upcoming Sessions
- Resources

What are Tags?



Tags are reusable placeholders you embed in your Transfers. Instead of building a separate Transfer for each company or destination, you define a Transfer once using Tags. Also, when a Schedule runs, each Tag is automatically replaced with the real value configured for that specific company.

- **One set of Transfers, many companies** - maintain a single clean set of Transfers that works for every company, rather than duplicating them per company;
- **No duplication** - changes to a Transfer logic apply everywhere automatically; you never have to update the same thing in multiple places;
- **Easy onboarding** - adding a new company doesn't require new Transfers; just define their Tag Values and point a Schedule at them;
- **Full control at runtime** - each Schedule selects which company's Tag Values to use, so you decide exactly what runs for whom and when.

The **Tag Values table** is the foundation. Each row defines a complete set of values for one company: the connection, currency, link storage references, and any other Tags you have defined. Think of each row as the company's "profile" that the system reads at runtime.

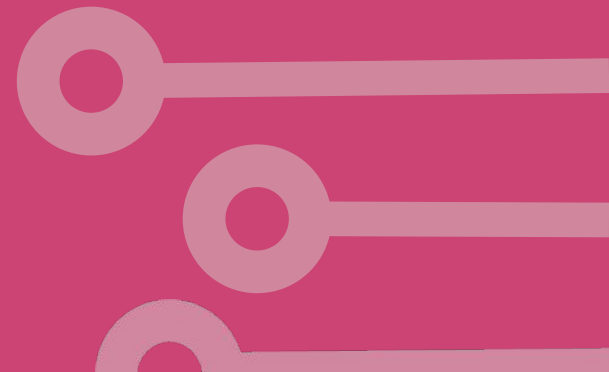
Where Tags Are Used

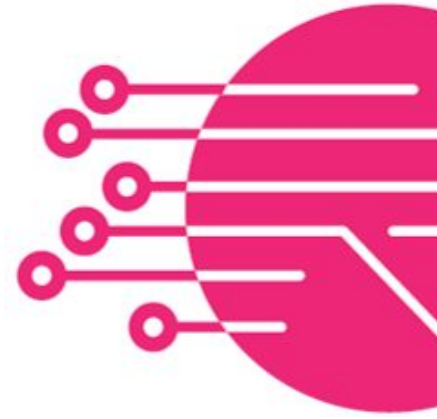
Tags can be used:

- **Description** - dynamically include the company name or any other identifier in the Transfer description, making it easy to see in logs and history which company a run belonged to;
- **Source** - swap in a different source connection per company, so the same Transfer can pull data from Company A's database on one run and Company B's on another;
- **Destination** - route the output to each company's specific target connection, whether that's a different NAV instance, database, or endpoint;
- **Link Storage** - reference a company-specific link storage, ensuring that data lands in the right place for each company;
- **Schedules** - when setting up a Schedule, you select the company and Tag Group to run with; the Schedule then substitutes all Tags automatically, so each company's data flows through the same Transfers on its own timetable



Demo: Tags in Myrapidi





Questions?



info@rapidionline.com
www.rapidionline.com
MyRapidi.com/wiki

Register for the upcoming sessions...

Open Office Hours — Quick Links

- Main page (what it is + upcoming sessions): Open Office Hours
<https://www.rapidionline.com/resources/open-office-hours>
- Complete Season 1 schedule (all 12 sessions + phases): Season 1 schedule
<https://www.rapidionline.com/product-updates/open-office-hours-season-1>
- Session 13 page (full details + registration): AI in MyRapidi - An Overview
<https://www.rapidionline.com/open-office-hours-ai-in-myrapidi>

Complete Schedule for OOH Season 1

PHASE 1: FOUNDATION (JANUARY)

Learn to navigate MyRapidi, structure transfers, and connect your systems.

Date	Session Title	Key Topics
Jan 15	MyRapidi Interface Walkthrough	Navigation, Transfers, Schedules, Groups, LinkStorages
Jan 22	Transfer Design 101	Actions, patterns, avoiding duplicates, design vs runtime
Jan 29	Connections: D365 OData Cloud	Azure App Registration, OAuth2, permissions, testing

PHASE 2: CONFIGURATION (FEBRUARY)

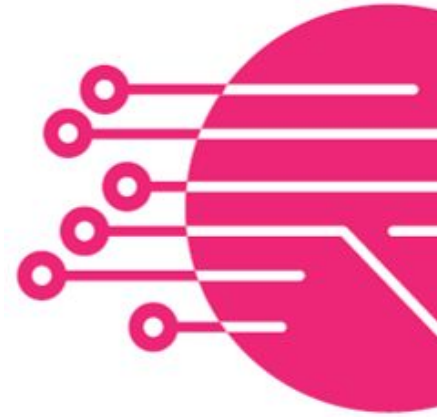
Master field mappings, timestamps, error handling, and CRM connections.

Date	Session Title	Key Topics
Feb 5	Connections: Salesforce & HubSpot	OAuth flows, user permissions, re-authorization
Feb 12	Field Mappings	Type conversions, conditional defaults, lookups, nulls
Feb 19	Timestamps & RTI	Change detection, Runtime Information Register, patterns
Feb 26	Continue on Error & Data Errors	Error handling, interpreting errors, and reprocessing safely

PHASE 3: ADVANCED (MARCH-APRIL)

Advanced troubleshooting, optimization, and multi-company patterns.

Date	Session Title	Key Topics
Mar 5	Logs & Runs	Troubleshooting flow, reading logs, isolating issues
Mar 12	Link Storage Deep Dive	Cross-referencing IDs, naming, import/export, and safety
Mar 19	Scheduling	Run windows, overlaps, dependencies, and time zones
Mar 26	Triggers & Near-Real-Time Patterns	When to trigger, rate limiting, polling vs triggers
Apr 9	Tags & Reusability	Parameterization, multi-company, variable substitution
Apr 30	AI in MyRapidi - An Overview	Introduction to AI in MyRapidi
May 7	AI Albert Agent	AI Assistant Albert with examples
May 14	MCP Server	MCP server setup for Rapidi



Give us Feedback

https://www.getfeedback.com/r/GLRQ1hn_W



info@rapidionline.com
www.rapidionline.com
MyRapidi.com/wiki

RESOURCES (1)

Documentation: [MyRapidi.com/wiki](https://myrapidi.com/wiki)

Support: <https://www.rapidionline.com/support>

Submit a case via MyRapidi: <https://myrapidi.com/login>

Subscribe to Product Updates: <https://www.rapidionline.com/product-updates>

Product Releases Notes: https://myrapidi.com/wiki/product_release_notes



SIMPLE

With a standard subscription
you can create new integrations yourself



FAST

Rapidi can be
implemented as standard in just a few days



ROBUST

No programming and
proven best practice configurations



FLEXIBLE

Any transfer can be in
any direction or bi-directional

RESOURCES (2)

Tags

Tags in the configuration

Schedule Tags



SIMPLE

With a standard subscription you can create new integrations yourself



FAST

Rapidi can be implemented as standard in just a few days



ROBUST

No programming and proven best practice configurations



FLEXIBLE

Any transfer can be in any direction or bi-directional



THANK YOU!

www.rapidionline.com



Andrea Arseni

Senior Data Integration Consultant & Customer Success
aa@rapidionline.com

